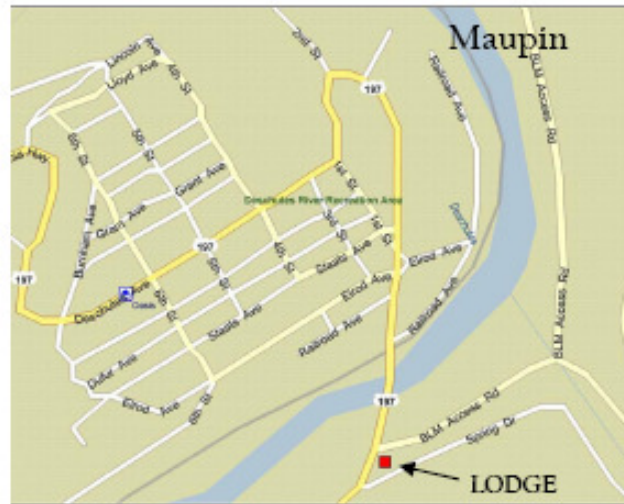


## Rooms

1. *Wapinitia* - queen & twin, T.V.
2. *Boxcar* - queen & twin, T.V.
3. *Oak Springs* - 2 queens, kitchen, T.V. & private deck
4. *Troat* - 2 twins
5. *Salmon* - 1 queen
6. *Steelhead* - 2 twins

### Rooms feature:

- Private bathrooms with showers
- Refrigerators, microwaves, coffee
- Individually controlled heating & air conditioning
- Wireless broadband internet
- Satellite television in Oak Springs, Wapinitia and Boxcar
- Full kitchen in Oak Springs
- Pets are welcome



After a cold bath, we have hot showers!

## River Run Lodge

210 Hartman Ave.  
P.O. Box 280  
Maupin, OR 97037

Fax: 866-228-8164  
Email: [dani@riverrunlodge.net](mailto:dani@riverrunlodge.net)  
[www.riverrunlodge.net](http://www.riverrunlodge.net)

877-335-8867

## River Run Lodge



*At Home, on the Deschutes...*

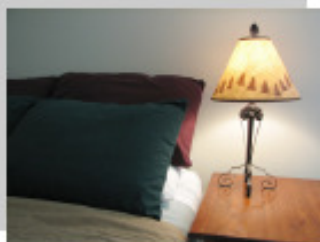
Welcome  
To  
*River Run Lodge*



Trout, Salmon & Steelhead Rooms

Open year round, River Run Lodge offers quiet, comfortable accommodations just a short walk from the wild and scenic Deschutes River. Located in the heart of Maupin's recreation district,

River Run Lodge offers easy access to the river, restaurants, and other local amenities, along with the privacy and intimacy of a small, 6 room lodge. On summer evenings, enjoy our shaded courtyard overlooking the river, and, if you wish, grill your own dinner on our complimentary barbeque.



### *Oak Springs*

Oak Springs is the largest of our rooms, with two queen sized beds, a full kitchen and dining area, and a private deck. Oak Springs, Wapinitia and Boxcar are connected by common hallways (with locking doors), and can be rented separately, or as a single unit for larger parties.

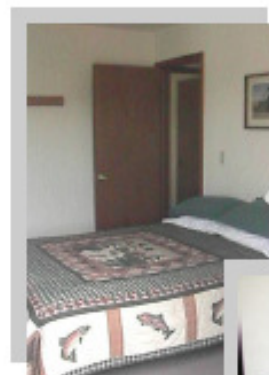


210 Hartman Ave.  
P.O. Box 280  
Maupin, OR 97037

Fax: 866-228-8164

Email: [dani@riverrunlodge.net](mailto:dani@riverrunlodge.net)  
[www.riverrunlodge.net](http://www.riverrunlodge.net)

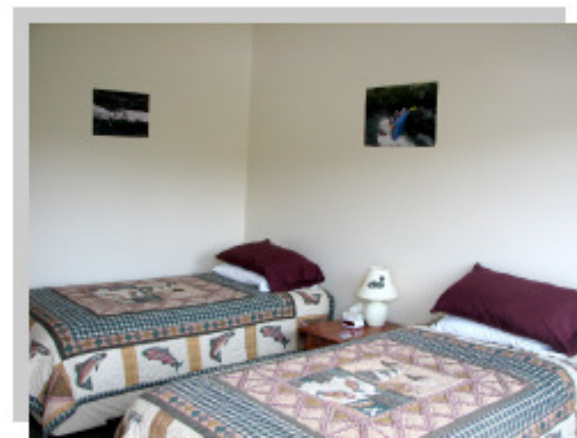
**877-335-8867**



Pleasant and inviting, our rooms provide a nice retreat after a full day on the river...



...or a starting point for your evening's entertainment!



Whatever your day brings, let

*River Run Lodge*

be the place you come home to while you're in Maupin.



## 2007 ROOM RATES

ROOM	<i>SUMMER</i> (Apr. 1 - Nov. 30)	<i>WINTER</i> (Nov. 30 - Mar. 31)
1 Wapinitia Queen & twin, 2d floor, satellite T.V., deck	\$85	\$60
2 Boxcar Queen & twin, 2d floor, satellite T.V., deck	\$85	\$60
3 Oak Springs Two queens, full kitchen, 2d floor, satellite T.V., private deck	\$105	\$75
4 Trout Two twins, first floor	\$65	\$50
5 Salmon Queen, first floor	\$65	\$50
6 Steelhead Two twins, first floor - All rooms have wireless internet access -	\$65	\$50

Rates based on double occupancy. Additional adult occupants are \$10 each per night. Children 5 and under free. Children 5- 12, \$5 additional. Pets are \$10 per night.

*River Run Lodge*

210 Hartman Ave.  
Maupin, OR 97037

877-335-8867

[www.riverrunlodge.net](http://www.riverrunlodge.net)